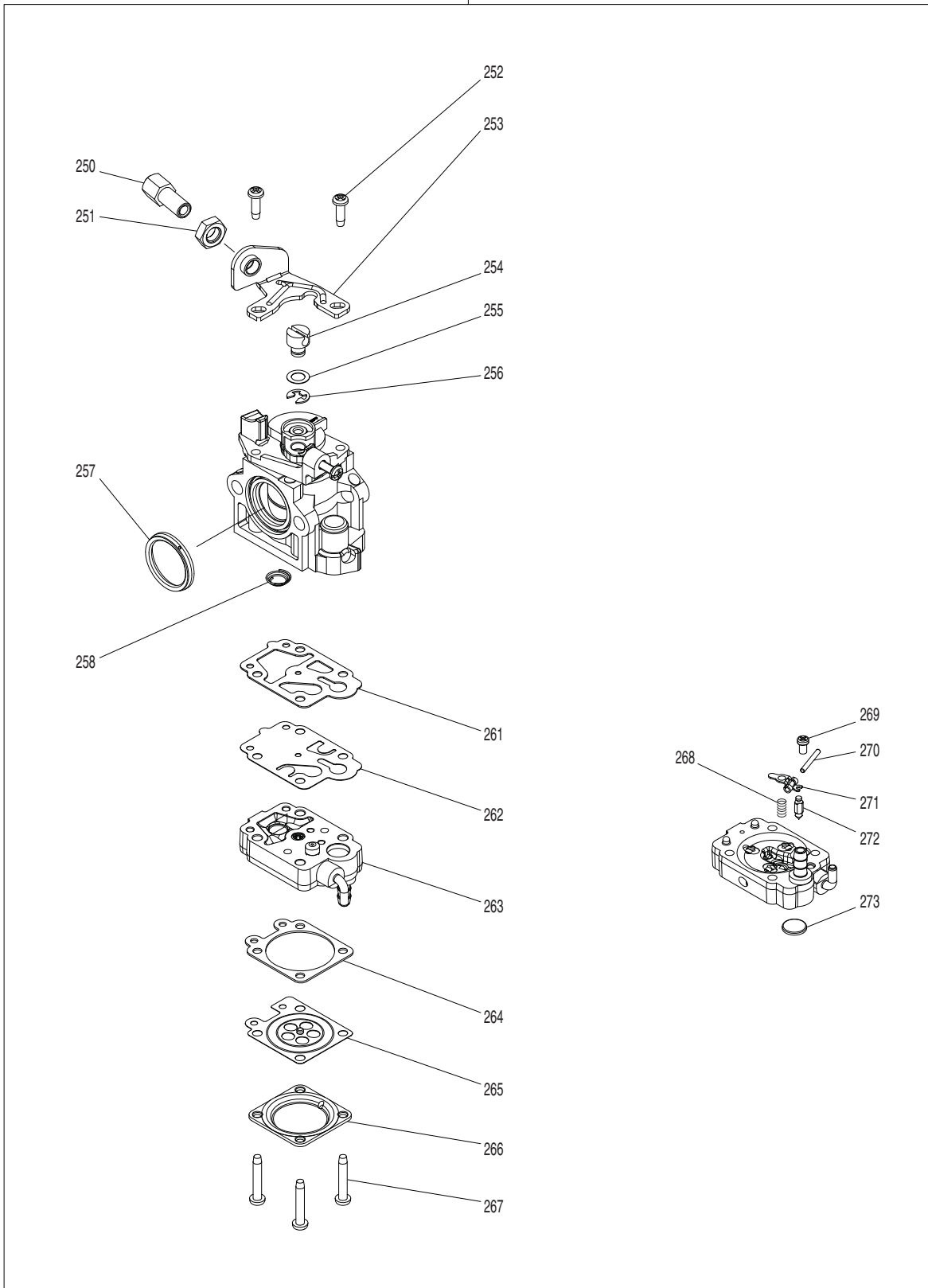


220



Item No.	Type	Sub	Part No.	Description	Qty	Unit
001			412144-8	ELBOW	1	PC.
002			213645-7	O RING 93	1	PC.
005			803S72-6	CAUTION LABEL	1	PC.
006			814E64-6	SERIAL NO. LABEL	1	PC.
008			456398-7	FRONT VOLUTE CASE	1	PC.
010			922343-9	H.S.H.BOLT M6X25 WITH WR	6	PC.
011			240152-7	FAN 250	1	PC.
012			922343-9	H.S.H.BOLT M6X25 WITH WR	4	PC.
013			456620-2	REAR VOLUTE CASE	1	PC.
014			266420-0	TAPPING SCREW 5X20	11	PC.
015			454903-4	SPRING HOLDER A	2	PC.
016			266420-0	TAPPING SCREW 5X20	2	PC.
017			232304-4	COMPRESSION SPRING 22	2	PC.
018			454904-2	SPRING HOLDER B	2	PC.
019			922223-9	H.S.H.BOLT M5X16 WITH WR	2	PC.
020			454903-4	SPRING HOLDER A	2	PC.
021			266420-0	TAPPING SCREW 5X20	2	PC.
022			232305-2	COMPRESSION SPRING 22	2	PC.
023			454904-2	SPRING HOLDER B	2	PC.
024			922223-9	H.S.H.BOLT M5X16 WITH WR	2	PC.
025	2		162501-7	BAND L COMPLETE	1	PC.
026	2		162502-5	BAND R COMPLETE	1	PC.
027			266420-0	TAPPING SCREW 5X20	4	PC.
028			143809-8	ENGINE COVER COMPLETE	1	PC.
		INC.	898343-0	CAUTION LABEL	1	PC.
029			424619-5	PLUG COVER	1	PC.
030			424620-0	DAMPER	2	PC.
031			163532-9	FILTER	1	PC.
032			345920-4	HOSE CLAMP	1	PC.
033			126444-7	TUBE ASSEMBLY	1	PC.
		INC.		Item No. 34-37		
034			168396-6	BREATHER	1	PC.
035			424505-0	GROMMET	1	PC.
036			412114-7	TUBE 3-370 (clear)	1	PC.
037			422125-4	FUEL TUBE 3-370 (black)	1	PC.
038			422137-7	TUBE GUARD 20-102	1	PC.
039			140831-6	TANK CAP COMPLETE	1	PC.
		INC.		Item No. 41		
041			213831-0	O-RING 29.5	1	PC.
043			898428-2	CAUTION PLATE	1	PC.
044			123595-7	FUEL TANK ASSEMBLY	1	PC.
		INC.		Item No. 31-33,39		
045			454905-0	BAND HOLDER	2	PC.
046			454894-9	FRAME	1	PC.
048			922223-9	H.S.H.BOLT M5X16 WITH WR	2	PC.
052	1		6672500300	LOCK RIVET	4	PC.
	2		458158-3	RIVET 6	4	PC.
053			161540-4	CUSHION	1	PC.
054	1		6672500300	LOCK RIVET	2	PC.
	2		458158-3	RIVET 6	2	PC.
055			424678-9	RUBBER RING 25	2	PC.
060			266326-2	TAPPING SCREW 4X18	5	PC.
061			187804-8	LEVER CASE SET	1	SET
062			638642-6	SWITCH UNIT	1	PC.
063			632C07-2	LEAD UNIT	1	PC.
064			456895-3	CORRUGATE TUBE	1	PC.
065			231469-9	COMPRESSION SPRING 4	1	PC.
066			454899-9	THROTTLE LEVER A	1	PC.
067			168843-7	CONTROL CABLE	1	PC.
068			252126-6	HEX. LOCKING NUT M4-7	1	PC.
069			454924-6	THROTTLE LINK	1	PC.

Item No.	Type	Sub	Part No.	Description	Qty	Unit
070			454900-0	THROTTLE LEVER B	1	PC.
071			253903-9	WAVE WASHER 6	1	PC.
072			267010-2	FLAT WASHER 5	1	PC.
073			922132-2	HEX. SOCKET HEAD BOLT M4X18	1	PC.
075			265762-9	THUMB SCREW M5X30	1	PC.
076			253052-2	FLAT WASHER 12	1	PC.
090			282025-8	HOSE CLAMP 100	1	PC.
091			454934-3	FLEXIBLE PIPE	1	PC.
092			282025-8	HOSE CLAMP 100	1	PC.
093	2		161653-1	SWIVEL PIPE COMPLETE	1	PC.
094			456400-6	CABLE HOLDER	1	PC.
100	2		161599-1	PULLEY	1	PC.
101			911233-1	PAN HEAD SCREW M5X20	3	PC.
102			808W92-9	MODEL NO. LABEL F/EB7660TH	1	PC.
103			819432-8	CAUTION TAG (10 LANGUAGES)	1	PC.
127			198209-7	PISTON SET	1	PC.
		INC.		Item No. 154,158		
128			199132-9	SHORT BLOCK SET	1	PC.
129			198224-1	CYLINDER HEAD SET	1	PC.
		INC.		Item No. 133,164-167,176		
130			922253-0	H.S.H.BOLT M5X30 WITH WR	2	PC.
131			144766-3	ROCKER COVER COMPLETE	1	PC.
132			5971500900	ROCKER COVER GASKET	1	PC.
133			123557-5	CYLINDER HEAD ASSEMBLY	1	PC.
134			442167-2	CYLINDER HEAD GASKET	1	PC.
135			168652-4	SPARK PLUG NGK CMR6H	1	PC.
136			265566-9	HEX SOCKET HEAD BOLT M6X30	5	PC.
137			198210-2	CYLINDER BLOCK SET	1	PC.
		INC.		Item No. 138,139		
138			424201-0	CHECK VALVE		
139			922352-8	HEX. SOCKET HEAD BOLT M6X30	6	PC.
140			442168-0	CAM GEAR GASKET	1	PC.
141			318725-5	CAM GEAR COVER	1	PC.
142			922223-9	H.S.H.BOLT M5X16 WITH WR	4	PC.
143			452047-4	OIL CAP	1	PC.
144			424343-0	GASKET	1	PC.
145			346083-9	LEAD VALVE	1	PC.
146			319395-3	RETAINER PLATE	1	PC.
147	2		922117-8	HSH BOLT M4X12	1	PC.
148			5976500100	OIL CASE GASKET	1	PC.
149			319008-6	OIL CASE	1	PC.
150			346452-4	GASKET	1	PC.
151			921412-3	HEX. BOLT M8X12	1	PC.
152			922243-3	HEX. SOCKET HEAD BOLT M5X25	5	PC.
153			593-65006-00	TUBE,OIL	1	PC.
154			197040-8	PISTON RING SET	1	PC.
156			213091-4	OIL SEAL 17	1	PC.
157			326039-8	PISTON PIN	1	PC.
158			233995-4	RING SPRING 12	2	PC.
160			254001-2	WOODRUFF KEY 4	1	PC.
161			267448-1	FLAT WASHER 41	1	PC.
162			213090-6	OIL SEAL(L)	1	PC.
163	2		127539-9	CRANK SHAFT ASSEMBLY	1	PC.
164			326691-2	INTAKE VALVE	1	PC.
165			326692-0	EXHAUST VALVE	1	PC.
166			234212-5	COMPRESSION SPRING 11	2	PC.
167			331966-6	RETAINER	2	PC.
170			256526-2	PUSH ROD	2	PC.
172			310715-4	CAM LIFTER L	1	PC.
173	2		126622-9	CAMGEAR ASSEMBLY	1	PC.
174			256200-2	PIN 5	1	PC.
175			331937-3	EXHAUST PORT SPACER	1	PC.
176			331967-4	COTTER	4	PC.

Item No.	Type	Sub	Part No.	Description	Qty	Unit
177			313267-4	CAM LIFTER R	1	PC.
178			424621-8	OIL GUARD	1	PC.
179			346979-4	MUFFLER GASKET	1	PC.
180			161408-4	MUFFLER	1	PC.
		INC.	911108-4	PAN HEAD SCREW M4X8	1	PC.
181			266771-1	SOCKET HEAD BOLT M6X18	3	PC.
182			424105-6	PLUG CAP	1	PC.
183			324891-8	PLUG CAP SPRING	1	PC.
184	2		922138-0	HEX SOCKET HEAD BOLT M4X20 W/WR	2	PC.
185			632G44-0	LEAD UNIT	1	PC.
186			638710-5	LEAD WIRE	1	PC.
187	2		161837-1	IGNITION COIL	1	PC.
188	1		5977001020	FLYWHEEL COMPL	1	PC.
	2		319170-7	FLYWHEEL COMPL	1	PC.
189			264054-3	FLANGE NUT M10	1	PC.
190			126165-1	RECOIL	1	PC.
		INC.		Item No. 191-200		
191			266585-8	TAPPING SCREW 5X12	1	PC.
192			424516-5	COLLAR	1	PC.
193			326200-7	SWING ARM	2	PC.
194			234257-3	FRICTION SPRING	1	PC.
195			441075-4	REEL	1	PC.
196	2		SG00000014	SPIRAL SPRING	1	PC.
197			141649-8	STARTER CASE COMPLETE	1	PC.
198			444043-6	STARTER ROPE	1	PC.
199			424361-8	STARTER KNOB	1	PC.
200			424360-0	ROPE STOPPER	1	PC.
201			456618-9	AIR CLEANER COVER	1	PC.
202			251481-3	THUMB SCREW M5X20	2	PC.
203			424809-0	AIR CLEANER ELEMENT	1	PC.
204			162346-3	SEPARATOR PLATE	1	PC.
205			352020-3	SEPARATOR MESH	1	PC.
206			266404-8	TAPPING SCREW BIND 3X14	1	PC.
207			424316-3	CHECK VALVE	2	PC.
208			453865-3	SEPARATOR CASE	1	PC.
209			251486-3	PAN HEAD SCREW M5X55 WITH WR	2	PC.
210			454910-7	CHOKE PLATE	1	PC.
211			266192-7	TAPPING SCREW 4X14	1	PC.
212			266420-0	TAPPING SCREW 5X20	1	PC.
213			456399-5	AIR CLEANER CASE	1	PC.
214			851W17-2	SERIAL NO. LABEL	1	PC.
215			454902-6	CHOKE LEVER	1	PC.
216			5233504200	CARBURETOR GASKET	1	PC.
217			346991-4	PLATE 31	1	PC.
218			412112-1	TUBE 3-60	1	PC.
219			168398-2	PRIMER PUMP	1	PC.
220			161487-2	CARBURETOR	1	PC.
		INC.		Item No. 250-258,261-273		
221			424830-9	CARBURETOR GASKET	1	PC.
222			424823-6	PIPE	1	PC.
223			422127-0	TUBE 3-55	1	PC.
224			452952-5	HOSE JOINT	1	PC.
225			412121-0	TUBE 3-130	1	PC.
226			422222-6	TUBE 3-190	1	PC.
227			424831-7	INSULATOR SEAL	1	PC.
228			266749-4	HEX. S.H.B. M5X25 WITH WR	2	PC.
229			424623-4	GROMMET	1	PC.
230			0119059490	SOCKET HEAD BOLT M5X14 (W,SW)	1	PC.
231			142926-1	INSULATOR COMPLETE	1	PC.
232			161583-6	INSULATOR GASKET	1	PC.
233			213261-5	O RING 17	1	PC.
234			454911-5	ICING VALVE	1	PC.
235			454912-3	ICING VALVE COVER	1	PC.

Item No.	Type	Sub	Part No.	Description	Qty	Unit
236			266192-7	TAPPING SCREW 4X14	3	PC.
237			213261-5	O RING 17	1	PC.
241			687055-8	STRAIN RELIEF	1	PC.
242			266192-7	TAPPING SCREW 4X14	1	PC.
243			687055-8	STRAIN RELIEF	1	PC.
244			266192-7	TAPPING SCREW 4X14	1	PC.
245			457060-7	CORRUGATE TUBE	1	PC.
246			456401-4	CARBURETOR COVER	1	PC.
247			451825-9	CLAMP	1	PC.
250			266795-7	ADJUST SCREW	1	PC.
251			264065-8	CABLE ADJUST NUT M6	1	PC.
252			266704-6	PAN HEAD SCREW M3X10	2	PC.
253			346491-4	BRACKET CABLE	1	PC.
254			325922-6	SWIVEL	1	PC.
255			413140-9	WASHER	1	PC.
256			257964-1	STOP RING E-3	1	PC.
257			424444-4	PACKING RING	1	PC.
258			234183-6	CONICAL COMPRESSION SPRING 5-9	1	PC.
261			442155-9	PUMP GASKET	1	PC.
262			WJ00009599	PUMP DIAPHRAGM	1	PC.
263			141672-3	PUMP BODY ASSEMBLY	1	PC.
264			442183-4	METERING DIAPHRAGM GASKET	1	PC.
265			168620-7	METERING DIAPHRAGM	1	PC.
266			WJ00021158	METERING DIAPHRAGM COVER	1	PC.
267			WJ00096325	SCREW	4	PC.
268			WJ00983160	SPRING	1	PC.
269			WJ00096424	SCREW	1	PC.
270			WJ00014477	METERING LEVER PIN	1	PC.
271			WJ00016648	LEVER	1	PC.
272			WJ00008282	INLET NEEDLE VALVE	1	PC.
273			WJ00014070	INLET SCREEN	1	PC.

ACCESSORIES

- Visit www.makita.ca for more accessories information -

A01			196771-6	BOX WRENCH 16 + DRIVER SET	1	PC.
		INC.	783019-1	DRIVER	1	PC.
A03			831304-7	ACCESSORY BAG	1	PC.
A04			242072-1	OIL BOTTLE (CONTAINER ONLY)	1	PC.
A05			196911-6	FLAT NOZZLE 90	1	PC.
A06			197722-2	END NOZZLE 90-68	1	PC.
A07			197723-0	LONG PIPE 90 (Bulk# 454895-7)	1	PC.
A09	2		T-02490	PREM MM4 ENGINE OIL 12/CS	1	PC.
A10			196956-4	* HIP BELT SET (Instruction Available)	1	PC.
A11			196912-4	SHORT PIPE 90 - PKG	1	PC.